

# Managing Parks for Future Generations



ESRI International User Conference  
August 8-10, 2006  
San Diego, CA





# Managing Parks for Future Generations Preserving International Treasures

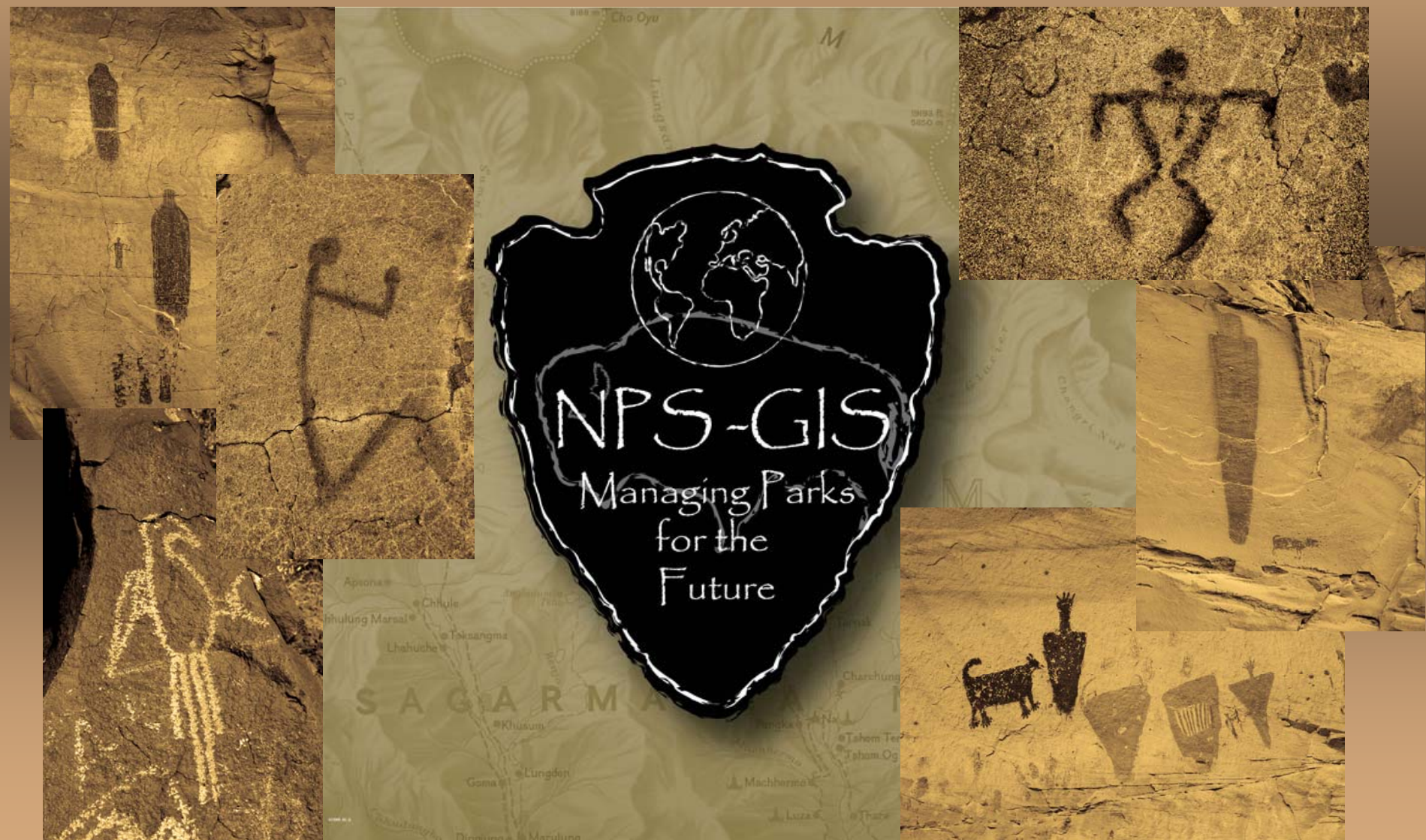
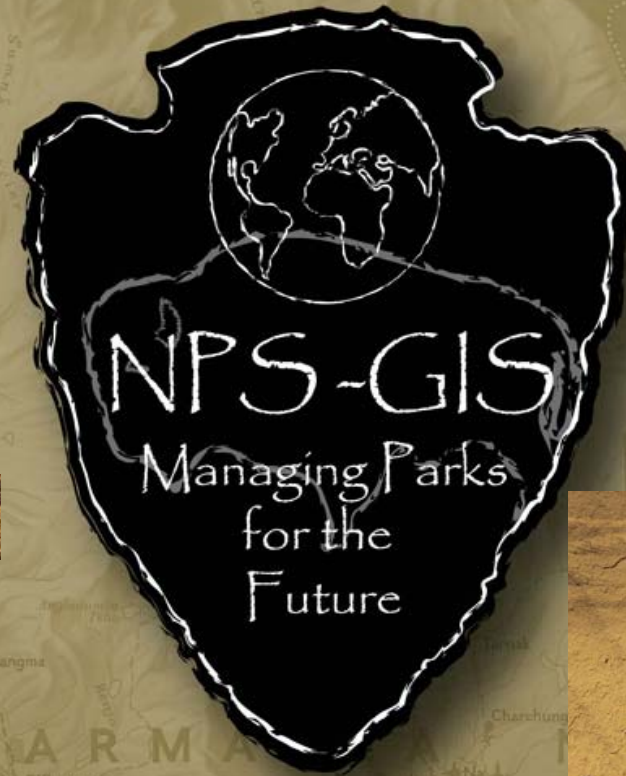






# Managing Parks for Future Generations

## National Parks and Protected Areas

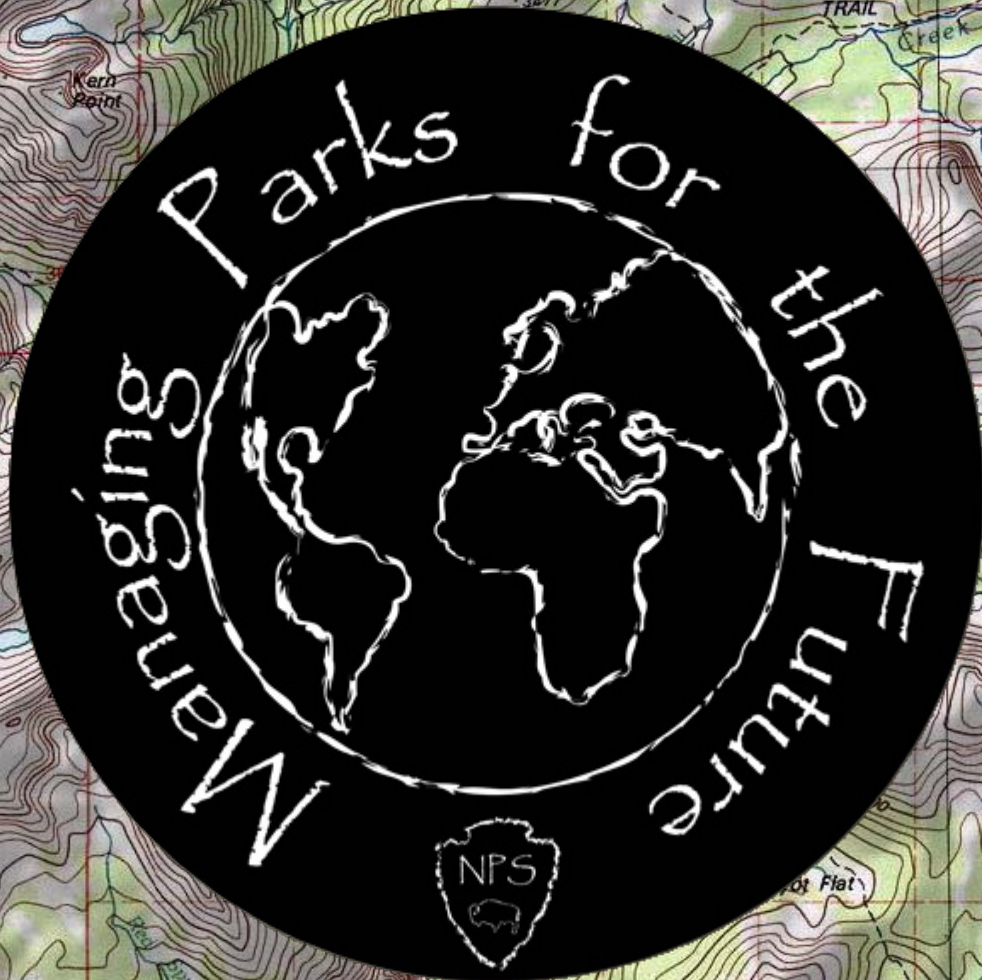








# Managing Parks for Future Generations Geography is the Key













# Managing Parks for Future Generations

ESRI International User Conference  
August 8-10, 2006  
San Diego, CA







# Managing Parks for Future Generations

## National Parks and Protected Areas

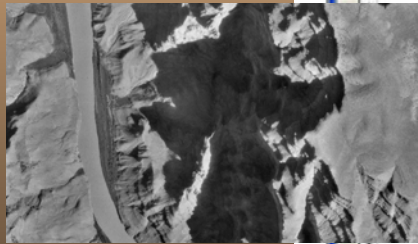




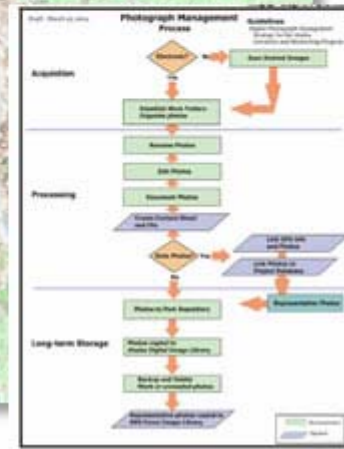
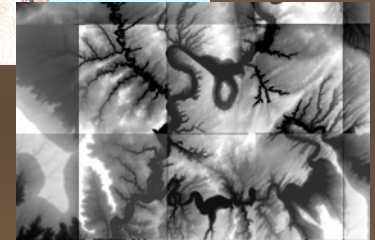
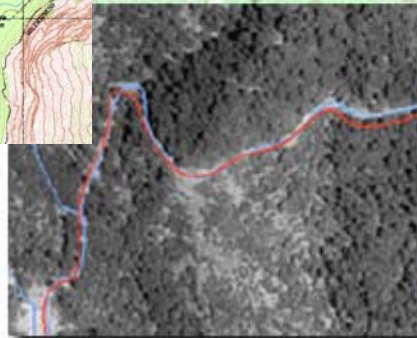
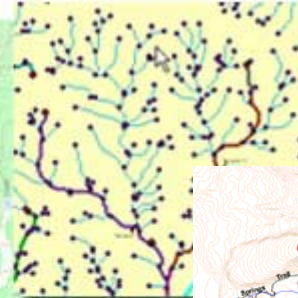




# GIS Tools and Resources



DATACAT : Table				
	DCAT IDX	CREATEDATE	CATDATE	SUBJECT
1	*	20010904	20020716	Ornithology
2	*	20010904	20020627	Water Quality
3	*	20010904	20010904	Water Quality
4	*	20010904	20020716	Water Quality
5	*	20010904	20020716	Zoology
6	*	20010904	20020716	Ornithology
7	*	20010904	20020716	Entomology
8	*	20010904	20020716	Entomology
9	*	20010905	20020716	Botany
10	*	20010905	20020716	Databases/Info
11	*	20010905	20010905	Water Quality
12	*	20010905	20010905	Water Quality
13	*	20010905	20020716	Mammalogy
14	*	20010905	20020716	Mammalogy
15	*		20020729	Ornithology



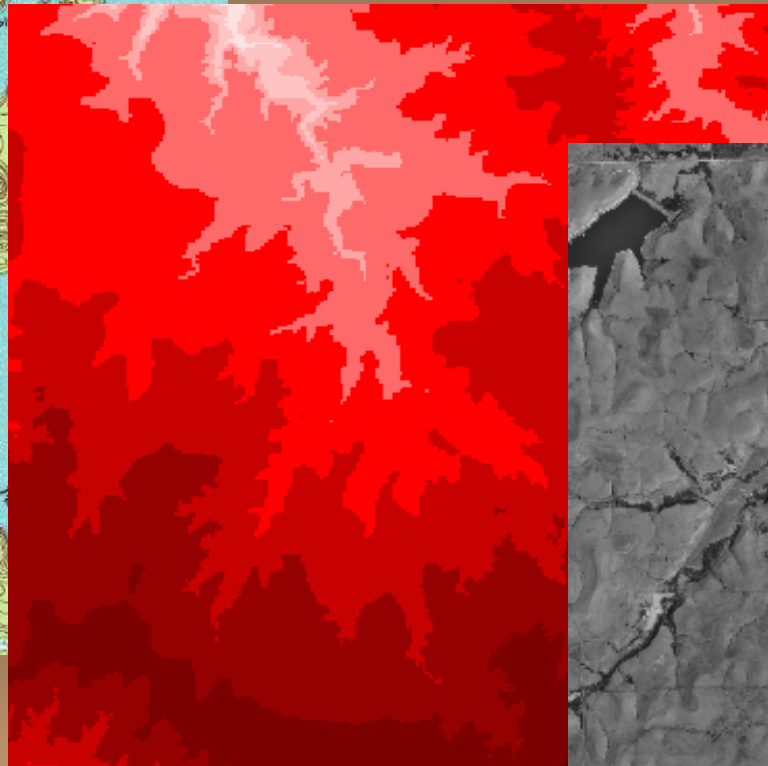




# Data for Visualization and Modeling



**DRG**



**DEM**



**DOQ**







